



Integrated Care Through A Technological Platform

Albert Alonso, MD, PhD

Laura Sampietro-Colom, MD, PhD

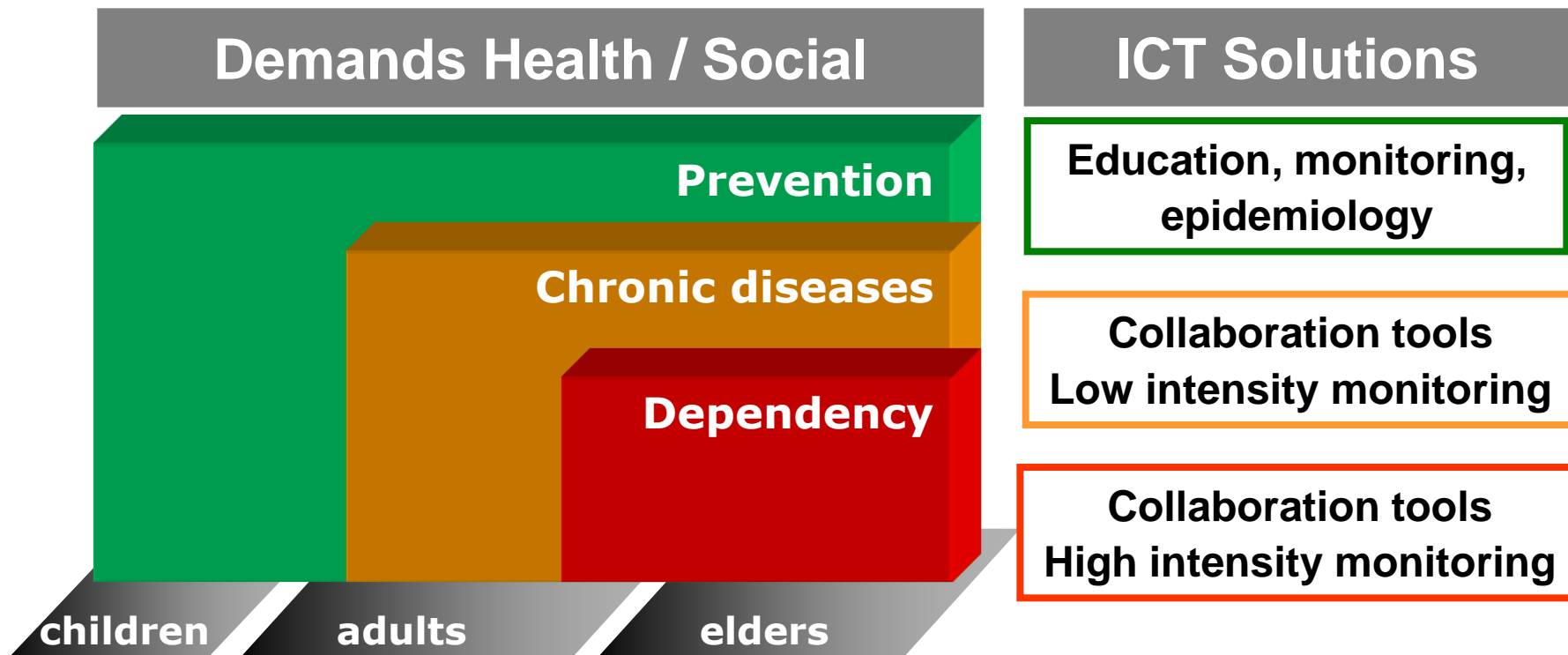
Health Service Innovation

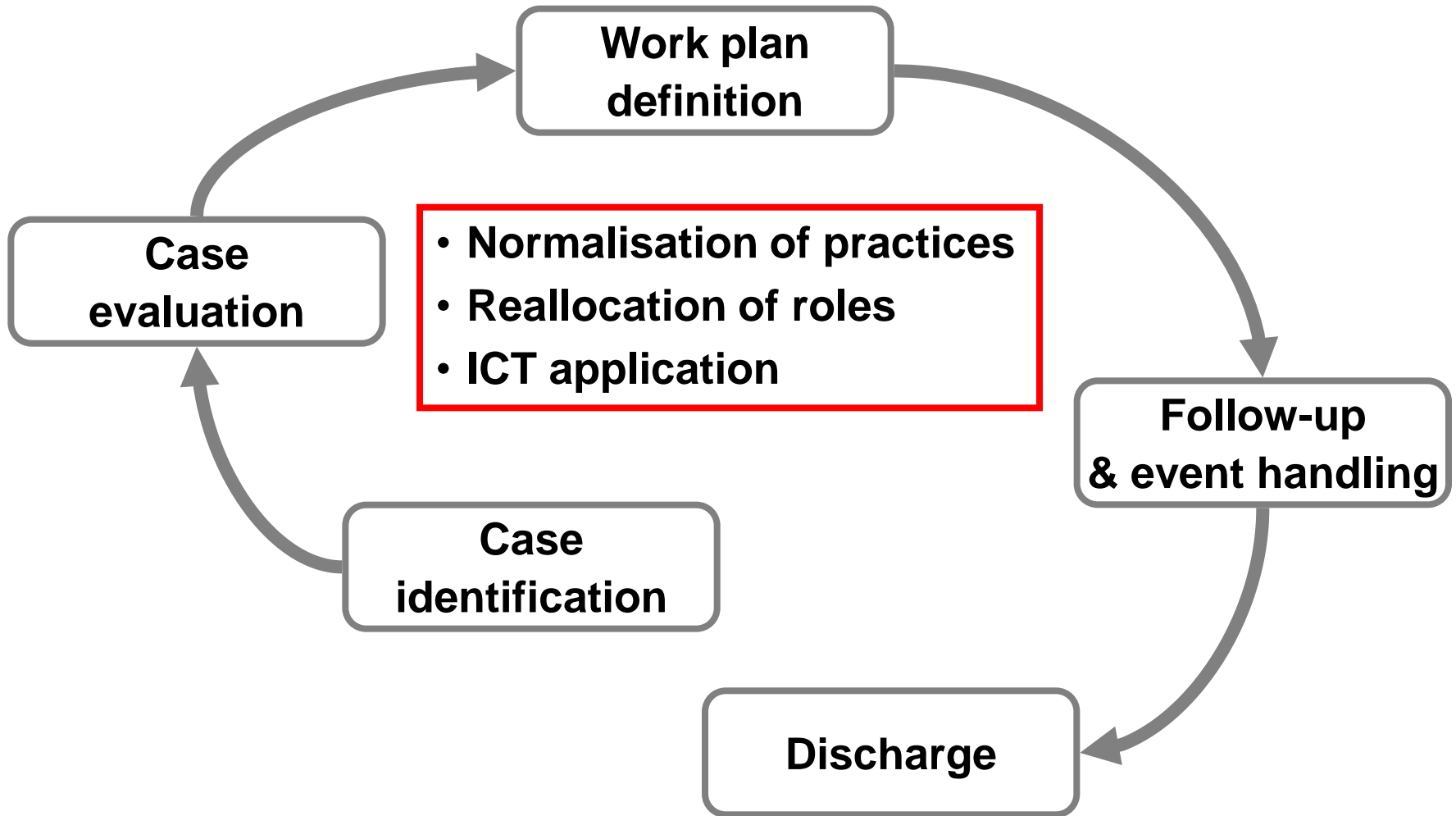
Living Labs Global

Zurich-Mediterranean Matchmaking Summit

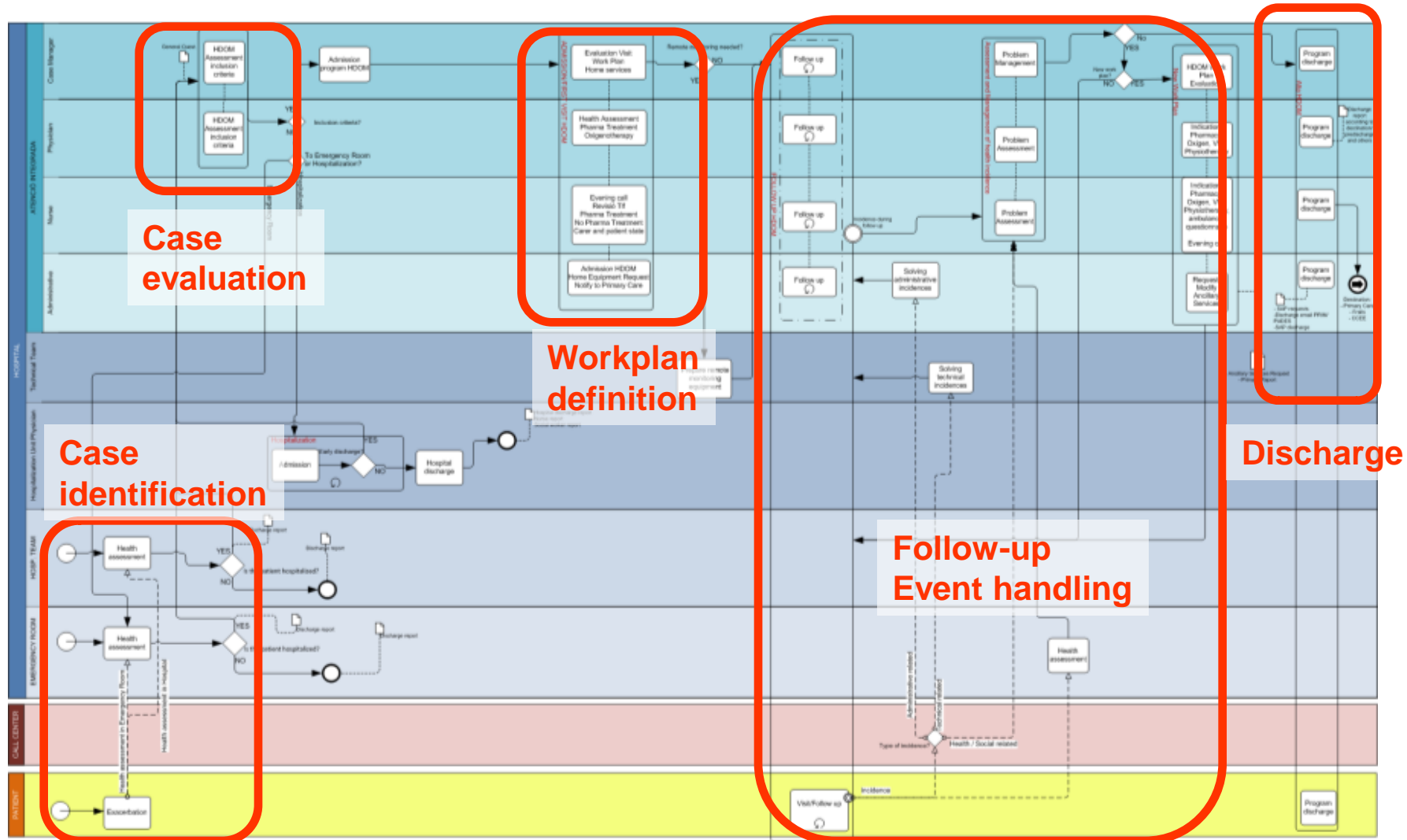
May 15th, 2009

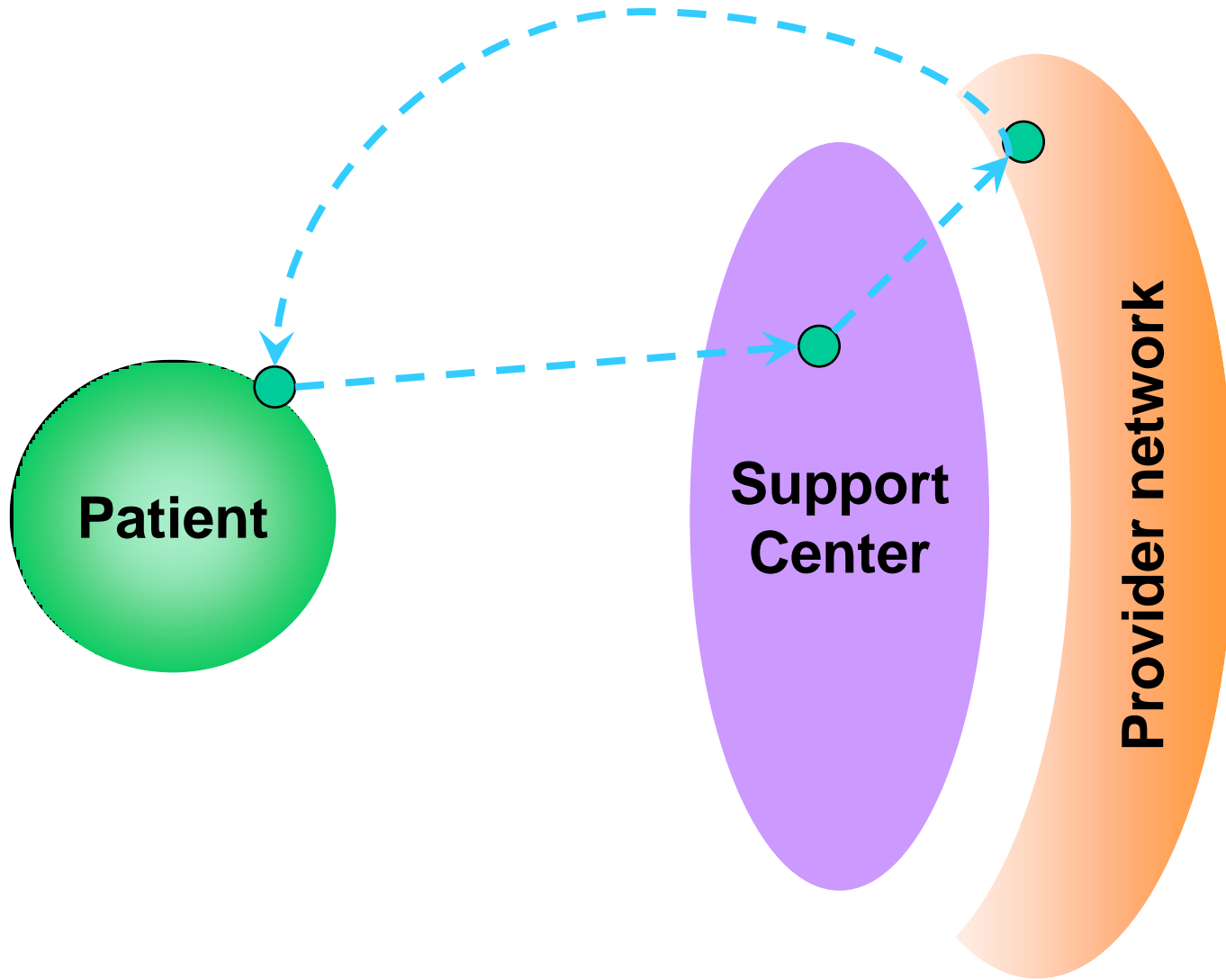
- Population with different health needs and risk profile
- Need for early diagnosis and prevention + personalized care strategies
- Normalizing interventions among clusters of individuals with similar needs & risk profile
- Need for an integrated & holistic approach of health care delivery



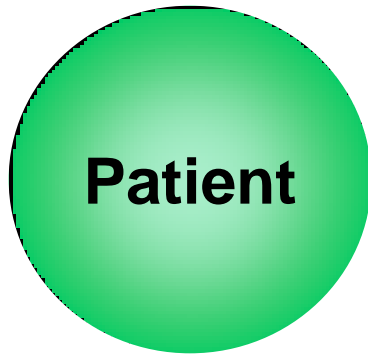


Detailed process view (Home hospitalisation)





Services for the patient



- Web portal
- Application for remote monitoring through mobile phone
 - Discrete / continuous registry
 - “online” / “offline” format
 - Questionnaires, metronome
 - Auto management utilities (agenda, alarms...)



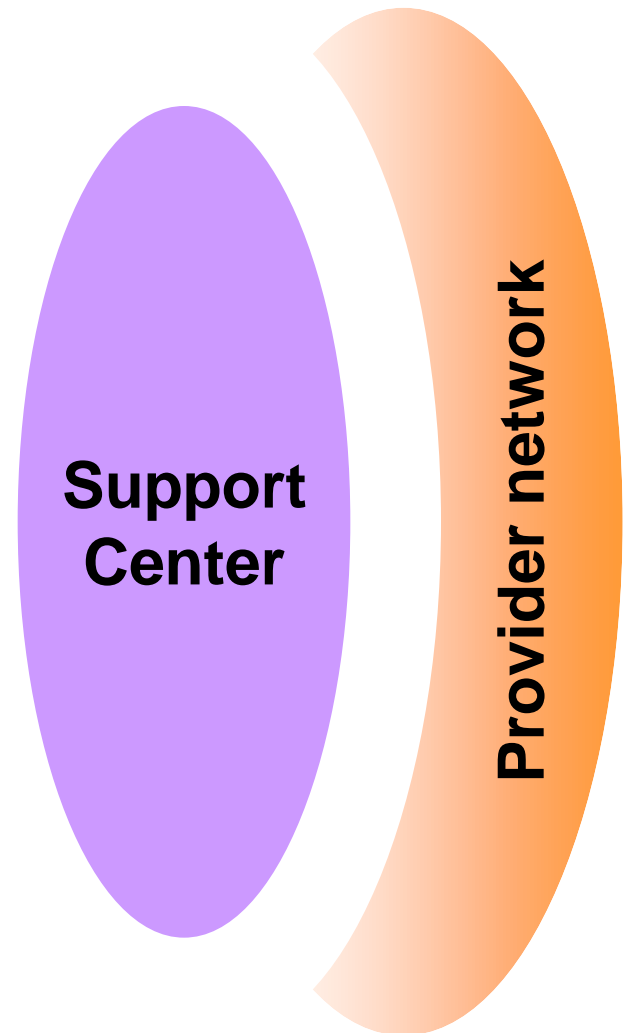
- Support center accessibility

Centro
Soporte

rovedores

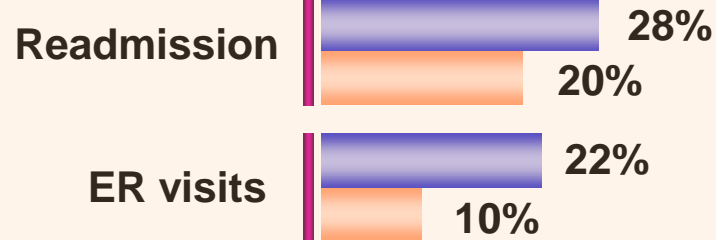
Services for the professional

- **Support center (demand management)**
- **Web portal**
- **Mobile units (home visiting)**
- **Collaborative tools between professionals (videoconference, instant messaging, chat, ...)**
- **Exploitation tools**
- **Interoperability with IS**
- **Epidemiological studies**
- **Espirometry validation studies**
- **Professional application**
 - **Patient management (multi pathology)**
 - **Follow up of integrated programs (H. H., Fragiles, Rehabilitation)**

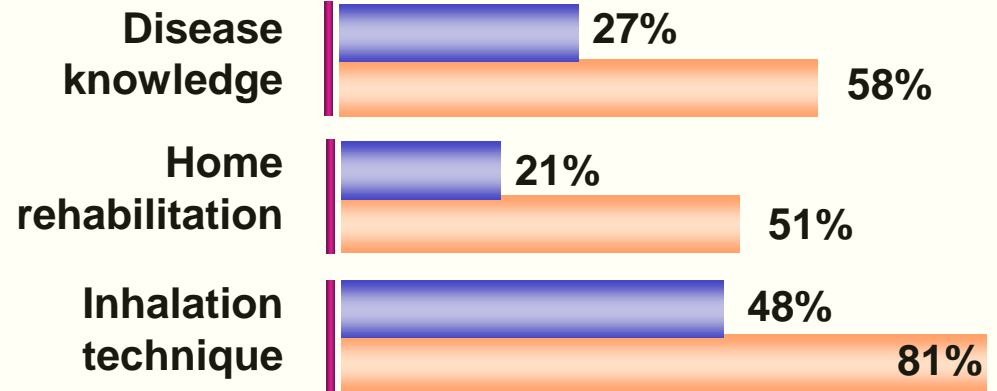


Results (COPD patients)

Better outcomes



Behavioural changes



Better quality of life



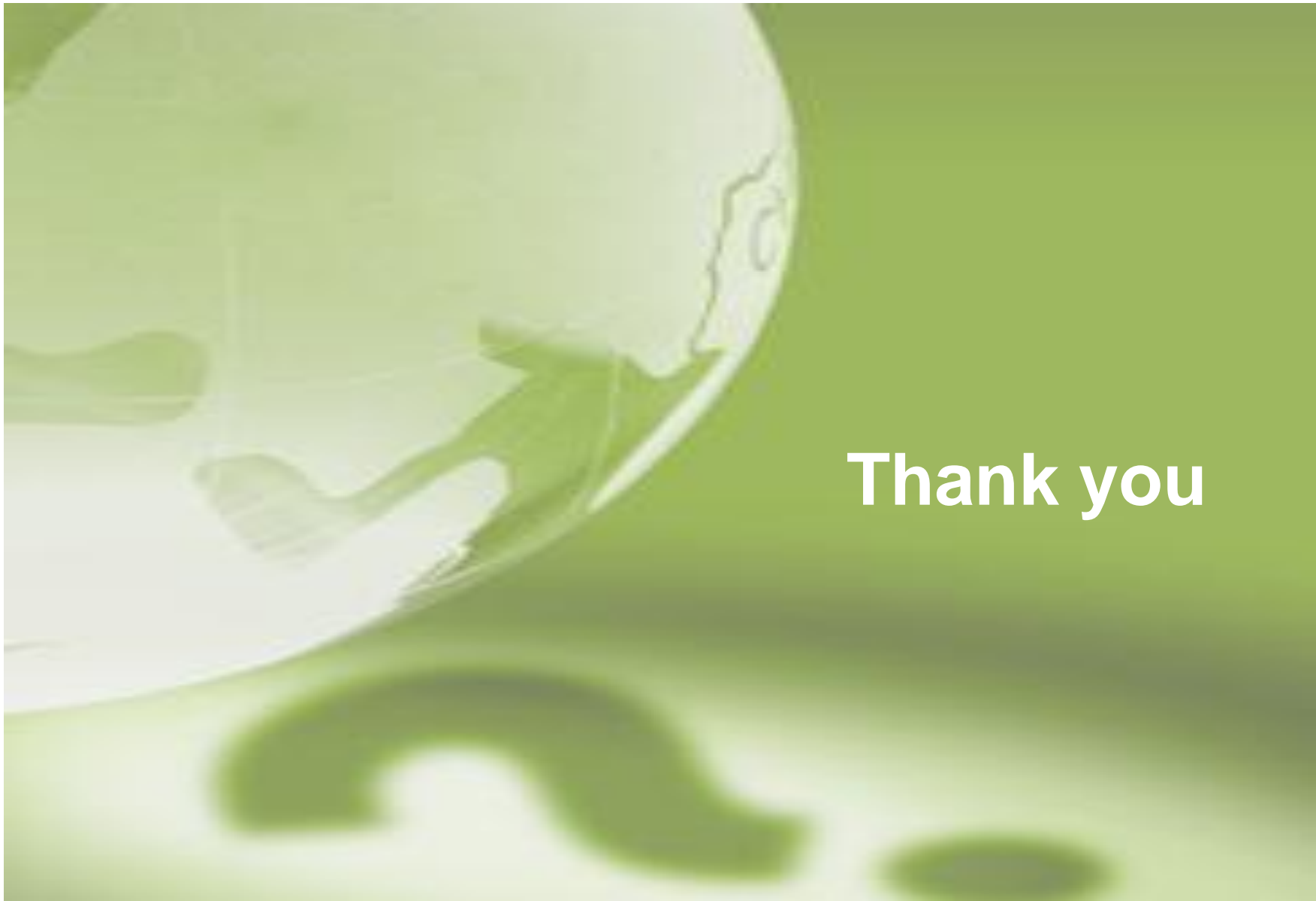
Cost savings



Linkcare vision



- **Web-based application addressed to management of chronic patients and elderly**
- **Platform supporting extensive use of services and maximum compatibility: modular, scalable and robust tools (Oracle and Java)**
- **Potential for integration with a diversity of HIS and mobile systems**
- **Facilitating organizational interoperability**
- **Prepared to support knowledge management applications**



Thank you